



YOSHIMURA

RESEARCH&DEVELOPMENT OF AMERICA, INC.

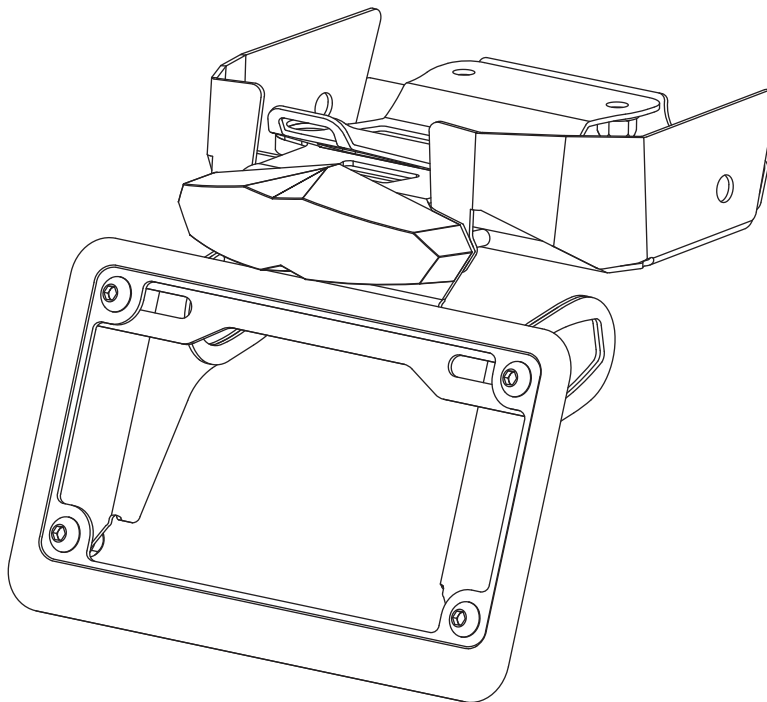
5420 DANIELS STREET STE A, CHINO CA., 91710 · (800) 634-9166 · (909) 628-4722 · FAX (909) 591-2198

www.yoshimura-rd.com

FENDER ELIMINATOR KIT

070BG142300

Kawasaki KLX230

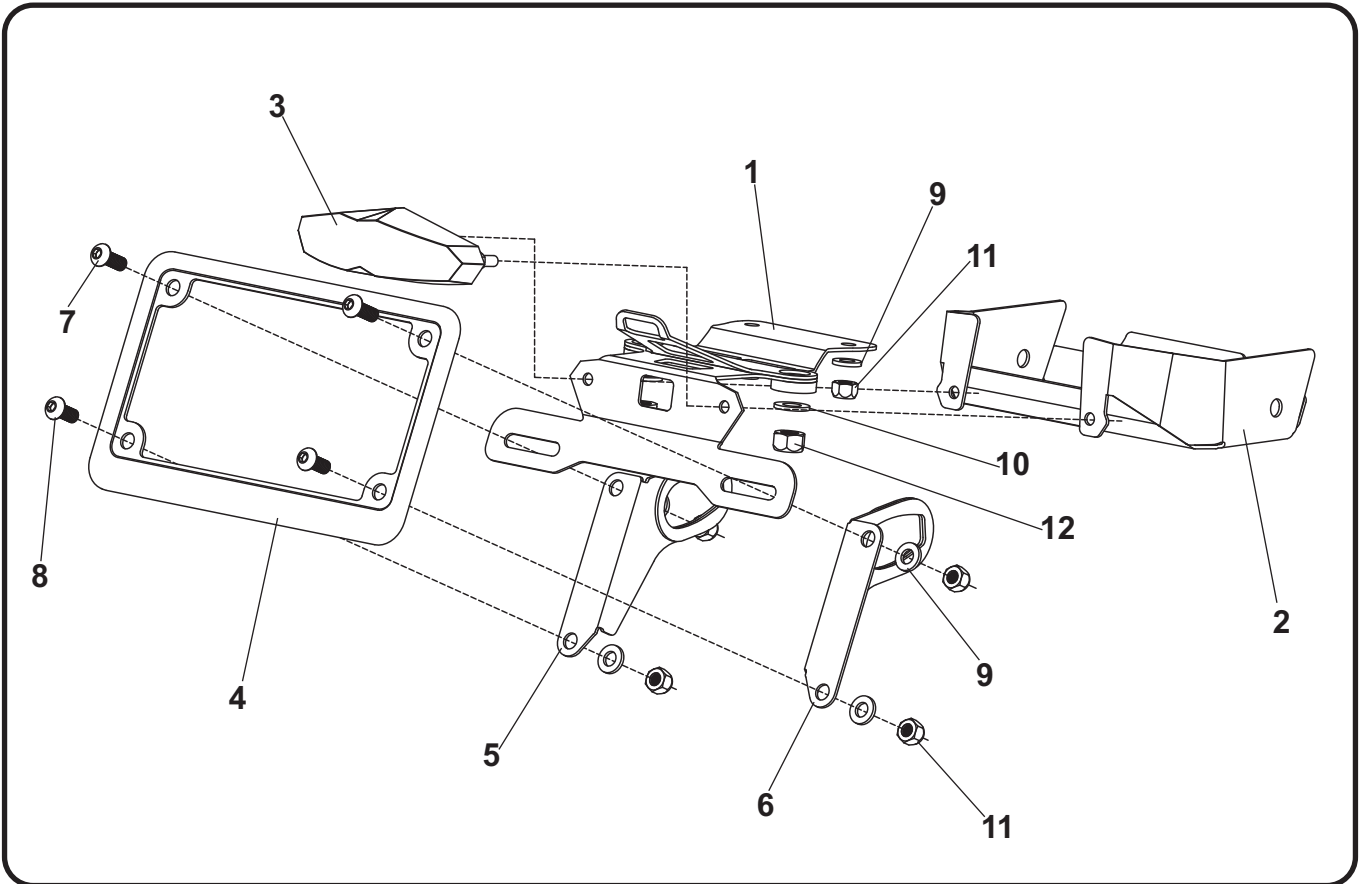


THIS PRODUCT IS NOT DOT APPROVED.

Yoshimura R&D of America, Inc. is not liable or responsible for any resulting event caused by the installation of this product. Check with local laws and regulations for compliance prior to installation and use. This product is not intended for use on public highways.



Assembly Diagram



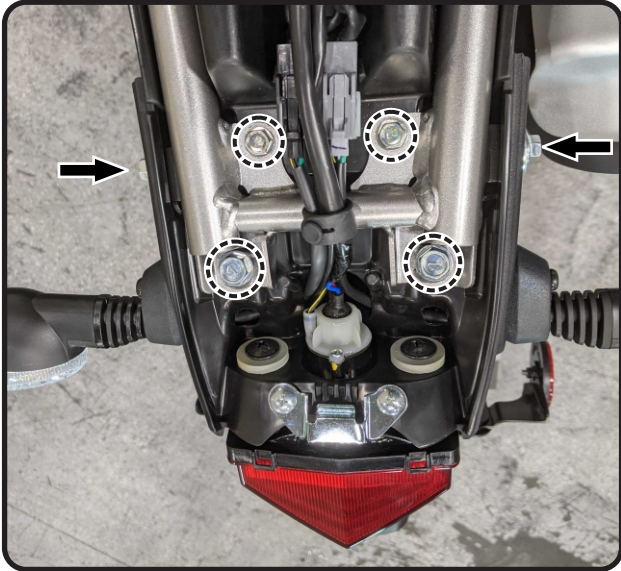
| No. | Item | Description | Qty. |
|-----------------------|---------------|---------------------------------------------|------|
| 1 | 14230-FEBKT | Fender Eliminator Bracket | 1 |
| 2 | 14230-FEBKT-4 | Fender Bracket Cover | 1 |
| 3 | HB025024-D | KLX250 Combination Light w/ Connector | 1 |
| 4 | 070BG-LPF | License Plate Frame | 1 |
| 5 | 14650-TSL-BKT | Left Turn Signal Bracket | 1 |
| 6 | 14650-TSR-BKT | Right Turn Signal Bracket | 1 |
| 7 | M6X16BHS | 6mm x 16mm Button Head Screw | 2 |
| 8 | M6X14BHS | 6mm x 14mm Button Head Screw | 2 |
| 9 | 6MMWASHER | 6mm Washer | 6 |
| 10 | 8MMWASHER | 8mm Washer | 2 |
| 11 | 6MMLN | 6mm Nylon Lock Nut | 6 |
| 12 | 8MMLN | 8mm Nylon Lock Nut | 2 |
| ** | 17100 | Yoshimura Sticker Sheet | 1 |
| Optional Parts | | | |
| | 072BGLTSFK | Yoshimura LED Front Turn Signal Kit | |
| | 072BGLTSR | Yoshimura LED Rear Turn Signal Kit w/ Relay | |
| | 070BGUNVTBKT | Universal Turn Signal Bracket Kit | |

** Not shown on diagram.

*** The Yoshimura Universal Turn Signal Bracket Kit is to be used with aftermarket stud-mounted turn signals and is sold separately.

Removal

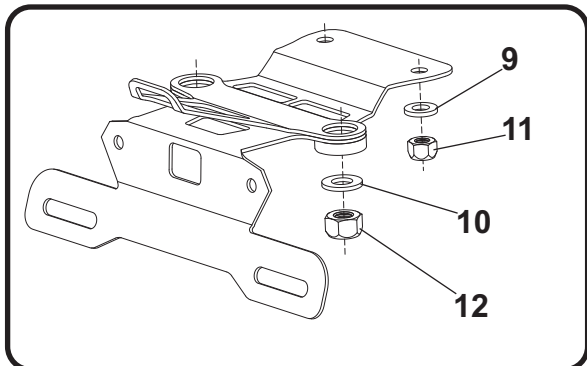
1. Remove rider seat.
2. Remove upper rear fender.
3. Locate and disconnect taillight, license plate light, and turn signal connectors.
4. While securely supporting the stock fender assembly, remove the six bolts securing the fender assembly to frame (4 from top and 2 from side). Carefully remove the stock fender assembly.



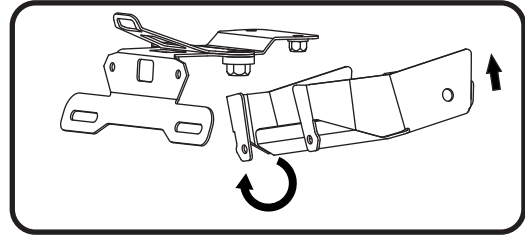
5. Disassemble and remove left and right turn signals from the stock fender assembly.

Installation

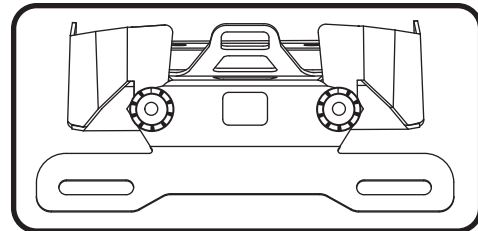
1. Install (No. 1) 14230-FEBKT, fender eliminator bracket to frame using the four stock fender bolts and washers and nuts supplied in the kit. Torque to fender bolts to factory specifications.



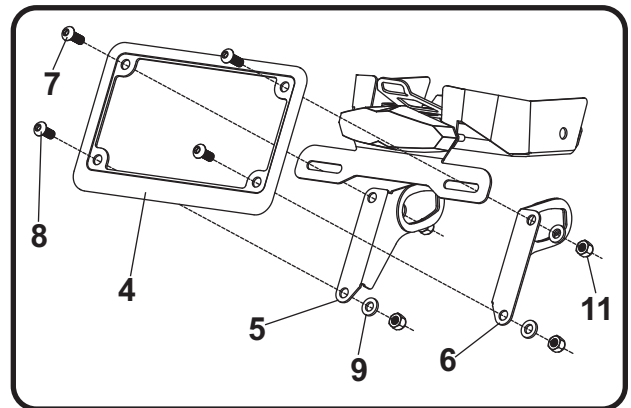
2. Install (No. 2) 14230-FEBKT-4, fender bracket cover and align mounting holes on the side to the frame and secure using the stock fender bolts. Do not torque side fender bolts at this time.



3. Align taillight mounting holes on fender bracket cover to fender bracket and install (No. 3) HB025024-D, combination light. Route taillight wire through hole in bracket and above to stock location. Reconnect taillight connector.



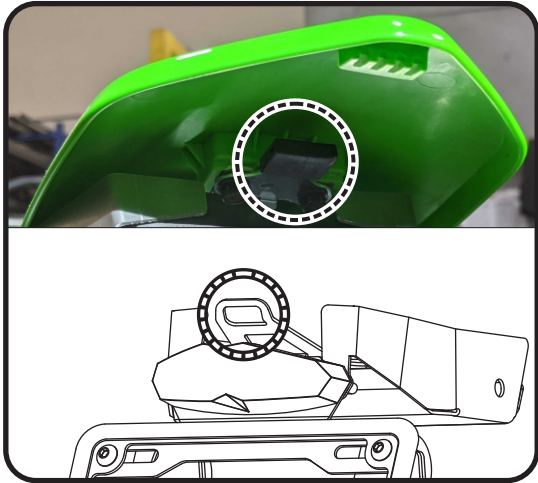
4. Install stock turn signals onto (No. 5,6) 14650-TSL/R-BKT, turn signal brackets.
5. Assemble and install (No. 4) 070BG-LPF, license plate frame and (No. 5,6) 14650-TSL/R-BKT, turn signal brackets to fender bracket and secure using (No. 7,8) 6mm button head screws and (No. 9,11) 6mm washers and nuts as shown.



6. Route turn signal wires through hole in bracket and to stock location and reconnect turn signal connectors.

7. Re-install upper rear fender using the reverse steps of removal.

Note: Make sure to slide the upper rear fender tab into fender bracket slot.



8. Re-install rider seat.
9. Check for proper function of license plate light and turn signals and that all brackets and components are secure prior to riding.