



YOSHIMURA

RESEARCH&DEVELOPMENT OF AMERICA, INC.

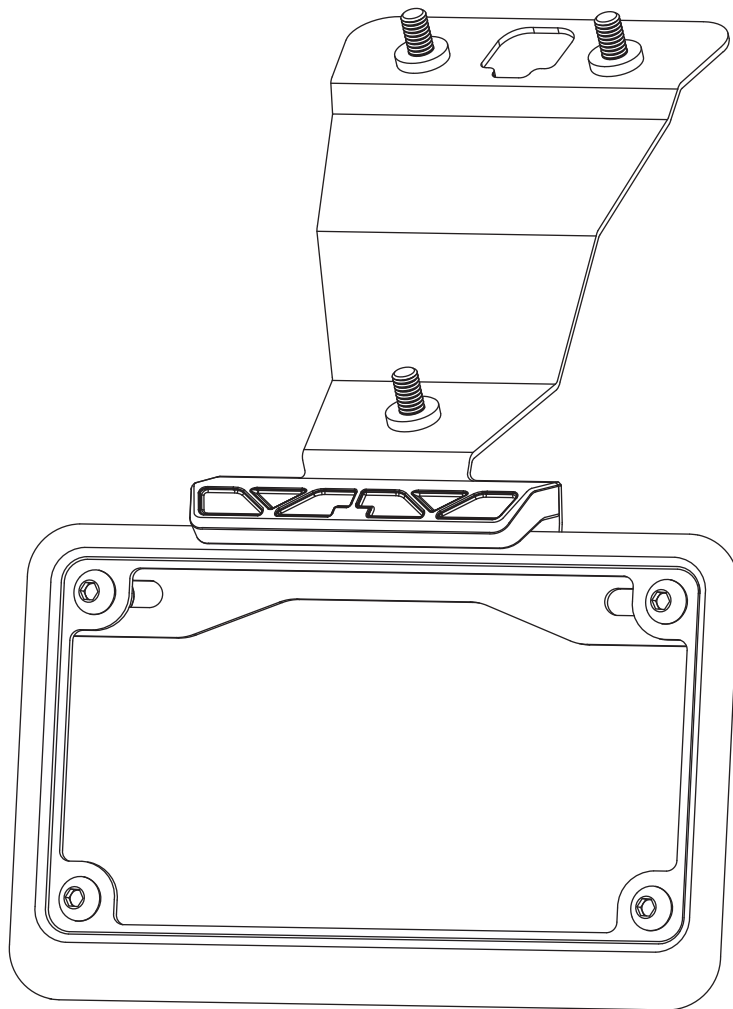
5420 DANIELS STREET STE A, CHINO CA., 91710 · (800)634-9166 · (909)628-4722 · FACSIMILE (909)591-2198

www.yoshimura-rd.com

FENDER ELIMINATOR KIT

070BG123410

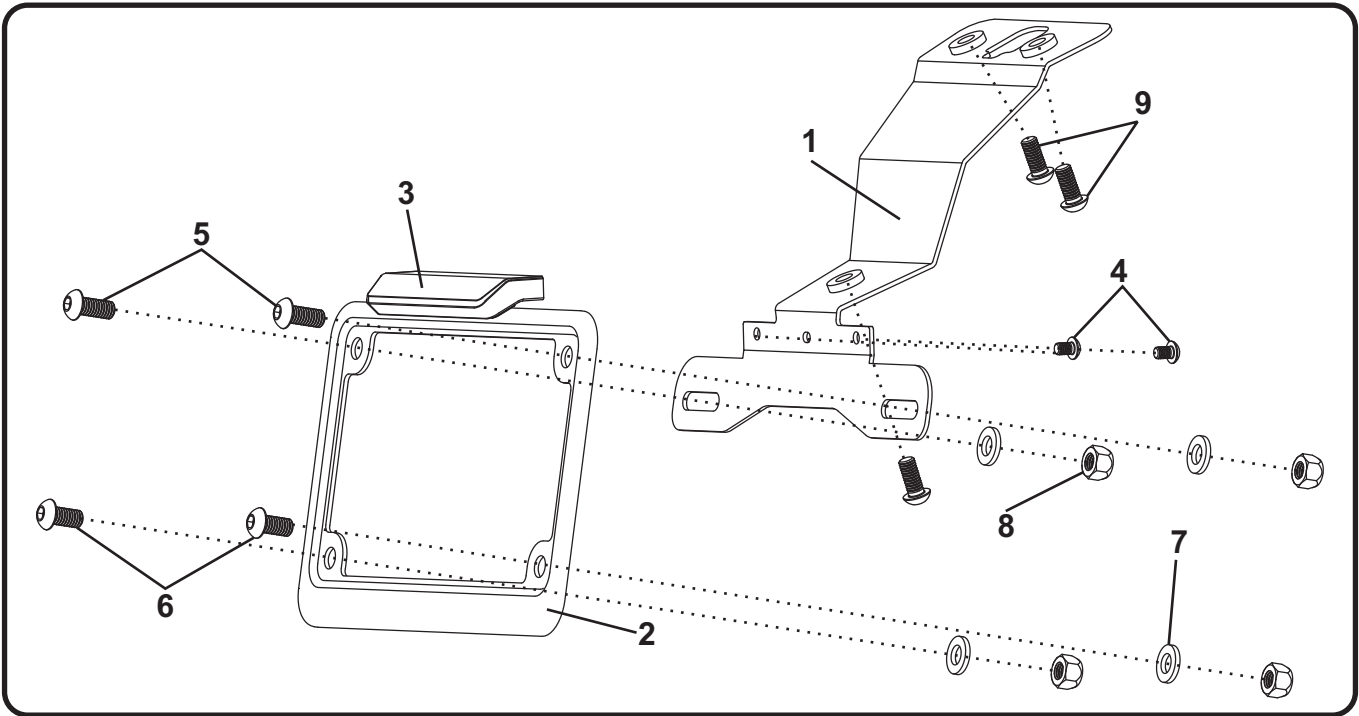
2021 Honda CRF300L RALLY



THIS PRODUCT IS NOT DOT APPROVED.
Yoshimura R&D of America, Inc. is not liable or responsible for any resulting event caused by the installation of this product. Check with local laws and regulations for compliance prior to installation and use. This product is not intended for use on public highways.



Assembly Diagram



No.	Item	Description	Qty.
1	12341-FEBKT	Fender Eliminator Bracket	1
2	070BG-LPF	License Plate Bracket	1
3	070BG-LH-K1	LED License Plate Light	1
4	M4X6BHS	4mm x 6mm Button Head Screw	2
5	M6X14BHS	6mm x 14mm Button Head Screw	2
6	M6X12BHS	6mm x 12mm Button Head Screw	2
7	6MMWASHER	6mm Washer	4
8	6MMLN	6mm Lock Nut	4
9	M6X16BHS	6mm x 16mm Button Head Screw	3
**	BN-SSS-22-18	Shrink Solder Connector	2
**	17100	Sticker Kit	1

** Not shown on diagram.

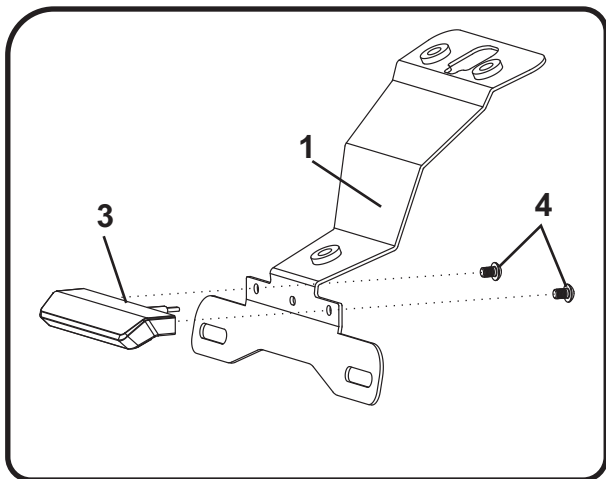
*** The Yoshimura Universal Turn Signal Bracket Kit is to be used with aftermarket stud-mounted turn signals and is sold separately.

Removal

1. Using the Owners/ Service Manual remove the seat and upper rear fender to gain access to the license plate connector and fender bolts.
2. Locate and disconnect license plate light and turn signal connectors.
3. While securely supporting the stock fender assembly, remove the three bolts securing the fender assembly to the subframe. Carefully remove the stock fender assembly making sure not to damage connectors in the process.
4. Cut the stock license plate light connector from the stock fender assembly. Be sure to cut at least a 6" section of wire from the connector.

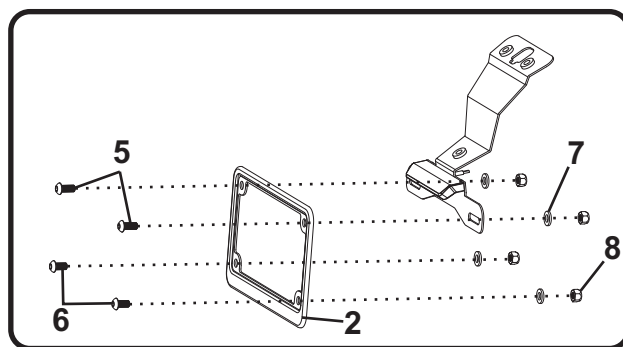
Installation

1. Install (No. 3) *070BG-LH-K1*, license plate light onto (No. 1) *12341-FEBKT*, fender eliminator bracket using (No. 4) *M4X6BHS*, 4mm screws.

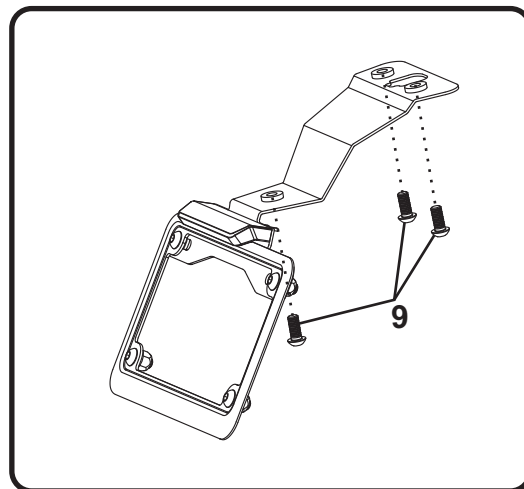


2. Using the *BN-SSS-22-18* solder shrink connectors provided in the kit, connect the Yoshimura license plate light wires to the stock license plate light wires as follows:

Green -to- Black
Black -to- Red
3. Install (No.2) *070BG-LPF*, license plate frame using the (No. 5,6) *M6X14BHS* and *M6X12BHS*, 6mm button head screws. Secure using (No 7,8) *6MMWASHER* and *6MMLN*, washer and nuts as shown.



4. Secure and install (No. 1) *12341-FEBKT*, fender eliminator bracket to the subframe using the provided (No. 9) *M6X16BHS*, 6mm button head screws.



5. Route license plate light wires through the hole in (No. 1) *12341-FEBKT*, fender eliminator bracket and through the lower rear cowl. Re-connect license plate light.
6. Re-install all components in opposite steps of removal.
7. Check for proper function of license plate light and that all brackets and components are secure prior to riding.